



MONTHLY MEMBERSHIP PROGRESS REPORT

District 4 L3

Results as of: 03/31/2019

GMT: HOWARD HUDSON

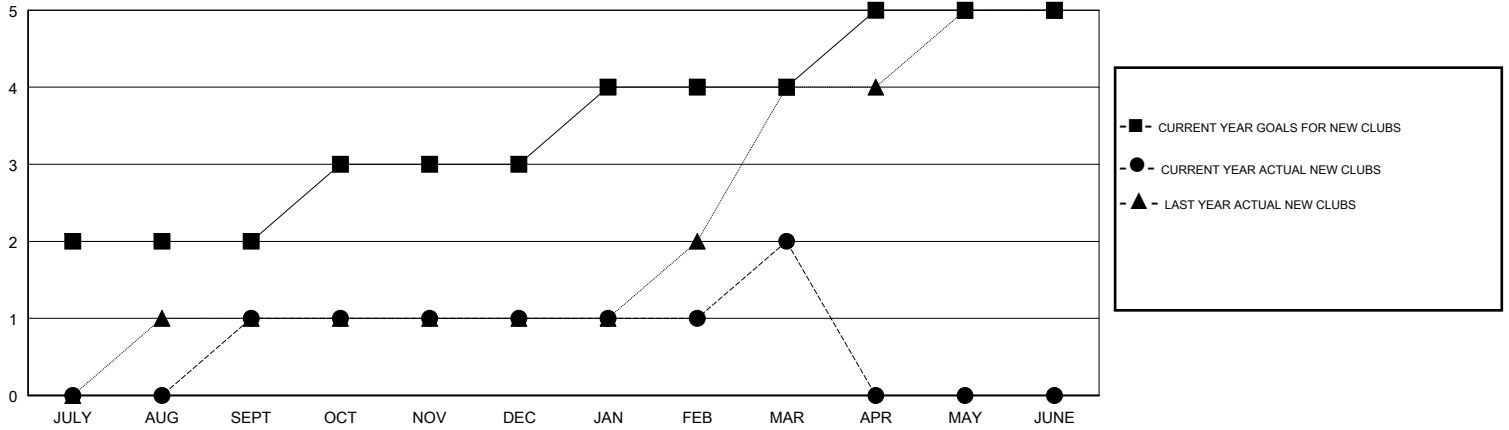
LOCATION CALIFORNIA

GMT CA

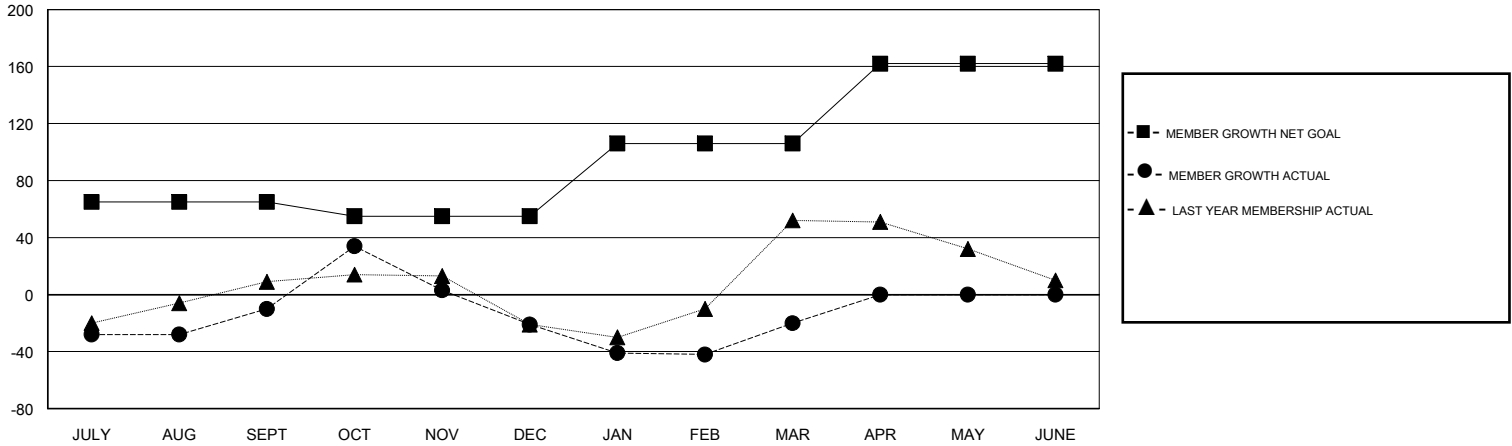
Clubs			
RESULTS FOR 2018-2019			
QUARTER	NEW CLUB GOAL	NEW CLUBS	DROPPED CLUBS
JULY/AUG/SEPT	2	1	0
OCT/NOV/DEC	1	0	0
JAN/FEB/MAR	1	1	1
APR/MAY/JUNE	1	0	0

Members			
RESULTS FOR 2018-2019			
QUARTER	MEMBER GROWTH NET GOAL	MEMBER GROWTH ACTUAL	DROPPED MEMBERS ACTUAL (including transfers)
JULY/AUG/SEPT	65	73	79
OCT/NOV/DEC	-10	67	78
JAN/FEB/MAR	51	67	59
APR/MAY/JUNE	56	0	0

GOALS AND ACTUAL NEW CLUBS CUMULATIVE



GOALS AND ACTUAL MEMBERS CUMULATIVE



DROPPED CLUBS: 1	32 CLUBS OF 61 ADDED 1 OR MORE NEW MEMBERS	<u>GENDER DISTRIBUTION</u>	
DROPPED MEMBERS		MALE	711 (55.16%)
DECEASED	6	FEMALE	578 (44.84%)
CLUB CANCELLED	11	Women Percentage Fiscal Year Goal: 44%	
OTHER	197	TOTAL FAMILY UNIT MEMBERS	353
TOTAL	214	FAMILY MEMBERS PAYING HALF DUES	188

[CLICK HERE FOR CUMULATIVE MEMBERSHIP DATA](#)